

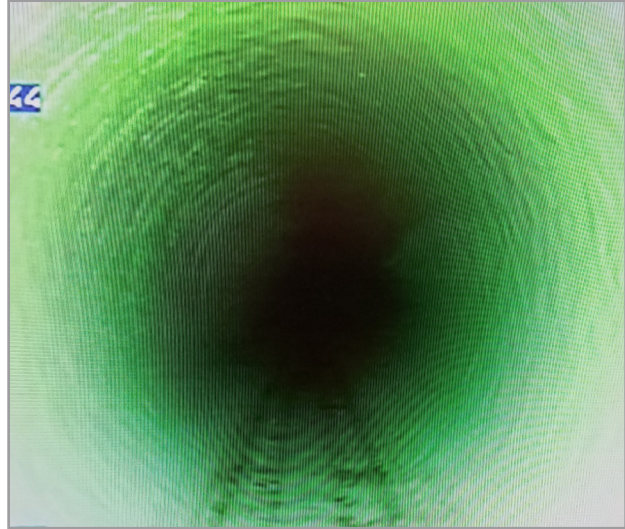
## Minor Surface Dimples & Rippling of PVC Pipe

As a result of the PVC pipe extrusion process, minor dimples and rippling may be present on the interior surface of the pipe wall. These features are often small enough to go unnoticed when viewed from the end of the pipe with a line of sight looking down the pipe interior.

Artificial light such as those mounted on CCTV inspection equipment may create shadows or lighting conditions which appear to exaggerate the severity of these features during close inspection of the line, following installation. Additionally, natural lighting conditions and close inspection from the end of the pipe with a line of sight looking down the pipe interior can produce a similar, exaggerated appearance.

These features however do not adversely affect the structural integrity of the pipe wall or the pressure capacity of the pipe, and have negligible effects on the flow efficiency of the pipe.

If you have additional questions regarding any features observed on the interior surface of our pipe, please contact North American Pipe Corporation Technical Services at [technical@northamericanpipe.com](mailto:technical@northamericanpipe.com) or 855-624-7473 option 3.



Acceptable rippling on the inside diameter of 8" ASTM D3034 PVC Gravity Sewer Pipe



Acceptable rippling on the inside diameter of PVC pipe under natural lighting conditions